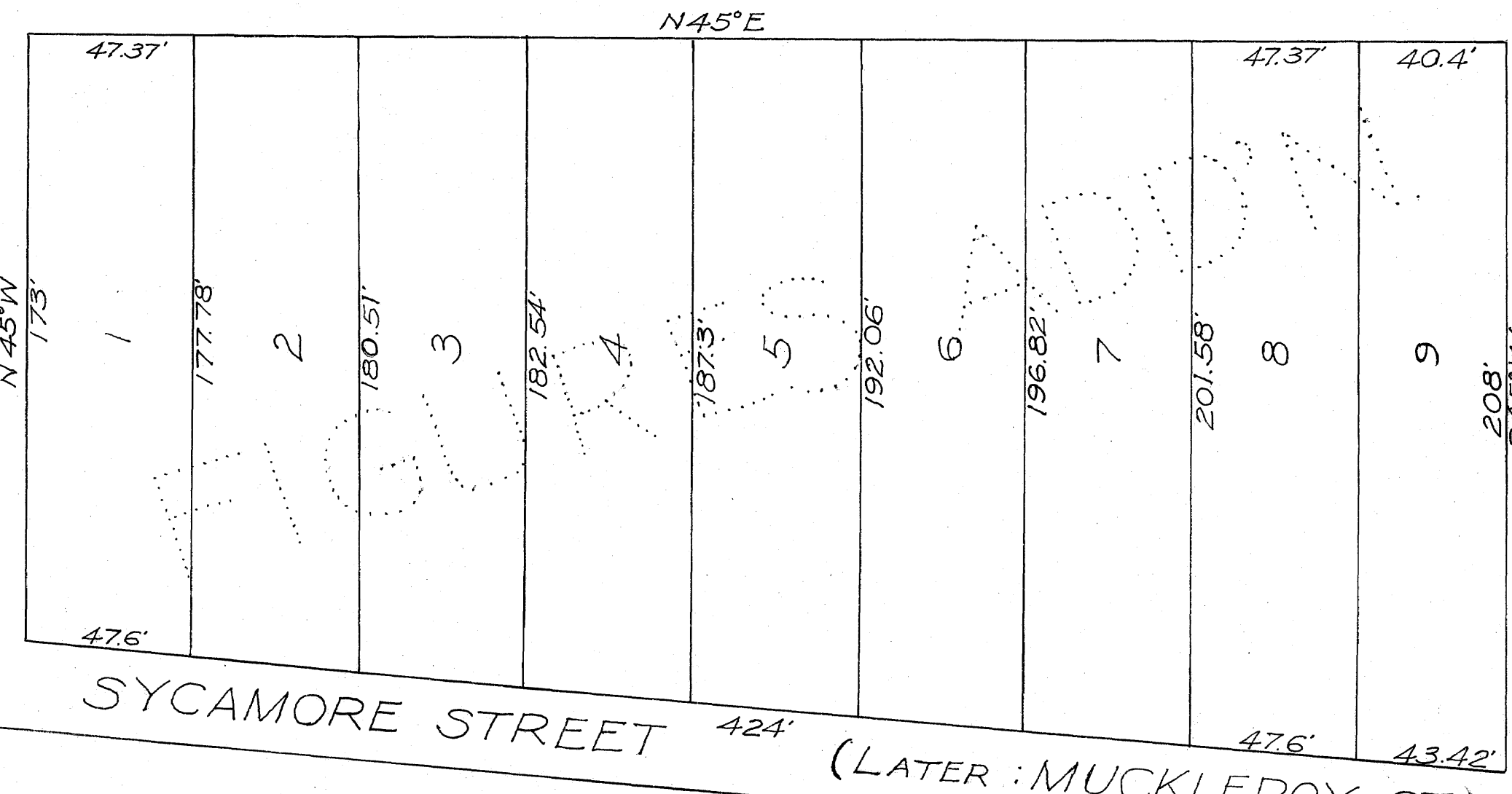


McCULLOCH NO. 2 ADD'N.

MUCKLERoy TRACT
(LATER: W. 18TH ST.)
N 45° W
173'

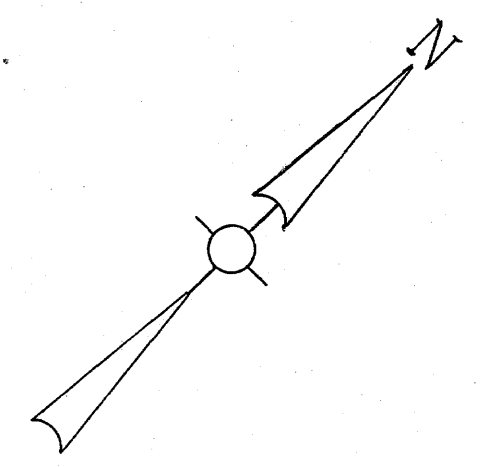
FLORIDA STREET
N 45° E



SYCAMORE STREET 424' (LATER: MUCKLERoy ST.)
S 45° W
208'

OLD MUMFORD RD. (LATER: W. 17TH ST.)
S 45° W

WEAVER TRACT (LATER: BROGDON-
HOUSE ADD'N.)



FIGURES ADDITION (TRACT)
D.R. VOL. 108, PG. 257 NOV. 22, 1941
SCALE: 1" = 40'

on land base
8/26/41
WD